

ESCOP Social Sciences Subcommittee Meeting

Wendy Fink, Associate Director for Food Agriculture
and Natural Resources

What is APLU?

- 235 University & University System Members
- Three Pillars
 - Increasing degree completion and student success
 - Advancing scientific research
 - Expanding engagement



Members

1890 Universities

Presidents

Presidents' & Chancellors'
Spouse / Partners

Academic Affairs (CAA)

Business Affairs (CBA)

Engagement & Outreach
(CEO)

Governmental Affairs (CGA)

Research (CoR)

Strategic Communications
(CSC)

Student Affairs (CSA)

HOME > MEMBERS > COUNCILS

Councils

APLU's councils enable senior public university leaders working in similar positions to come together to address critical issues and expand their knowledgebase within their professional area of expertise.

Council of 1890 Universities



Council of Presidents



Council of Presidents' & Chancellors' Spouses/Partners



Council on Academic Affairs (CAA)



Council on Business Affairs (CBA)



Council on Engagement and Outreach (CEO)



Council on Governmental Affairs (CGA)



Council on Research (CoR)



Featured Project



College Costs, Tu Aid Project Degree

APLU and the Ame
State Colleges and
developed Project
in which nearly 50
universities have p
award 3.8 million n
2025.

View All

Featured Project



/sebin/b/r/page-banner-pillars-UVA.jpg

Members

- Access, Diversity & Excellence (CADE)
- Commission on Food, Environment, & Renewable Resources (CFERR)
- Information, Measurement, & Analysis (CIMA)
- Innovation, Competitiveness, & Economic Prosperity (CICEP)
- International Initiatives (CII)
- Science & Mathematics Teaching Imperative (SMTI)
- Urban Serving Universities

HOME > MEMBERS > COMMISSIONS

Commissions

APLU's commission structure enables individuals from multiple disciplines across the universities to come together to address critical issues and expand their knowledgebase in areas of common interest regardless of position.

- Commission on Access, Diversity and Excellence (CADE) +
- Commission on Food, Environment, and Renewable Resources (CFERR) +
- Commission on Information, Measurement, and Analysis (CIMA) +
- Commission on Innovation, Competitiveness, and Economic Prosperity (CICEP) +
- Commission on International Initiatives (CII) +
- Commission on the Science and Mathematics Teaching Imperative (SMTI) +
- Coalition of Urban Serving Universities +



Members in the S

University of Wa



University of Wi



- Access & Diversity
- Accountability & Transparency
- Agriculture, Human Sciences, & Natural Resources
- College Costs, Tuition, & Financial Aid
- Degree Completion
- Economic Development & Community Engagement
- International Programs
- Learning With Technology
- Research, Science, & Technology
- STEM Education
- Urban Initiatives

2015 APLU Annual Meeting

Delivering the Future

More than 1,400 leaders from public higher education came to Indianapolis this year for the 2015 APLU Annual Meeting. View the opening video; read APLU's op-ed on inclusiveness and free speech; get information on the Alan Alda Center for Communicating Science; watch videos of the 2015 Magrath Awards Finalists; read APLU news that came out of the meeting; and register early for 2016.

INDIANAPOLIS, IN

Annual Meeting Recap

2015 APLU Annual Meeting

NEWS

MEETINGS & EVENTS

BLOG

APLU IN THE NEWS

DECEMBER 18, 2015

APLU Statement on Congressional Passage of Tax Extender Bill

DECEMBER 17, 2015

APLU Statement on FY2016 Omnibus Appropriations Bill

DECEMBER 15, 2015

APLU's Michael Tanner Named National Academy of Inventors Fellow

[View All News >](#)

Strengthening & Advancing Public Universities Collectively.

Focused on increasing degree completion and academic success, advancing scientific research, and expanding engagement, APLU

- Federal Budget & Appropriations
- Higher Education Policy & Student Aid
- Research & Science
- Agricultural & Natural Resources
- Technology Transfer & Intellectual Property
- International Issues
- Tax & Finance Issues

Strengthening Communities


Public Research Universities Drive Economic Development through Community Engagement

APLU members are engaged in their communities, regions, and beyond, tackling societal challenges, creating great places to work and live, and advancing economic growth and prosperity.


[Find Out More](#)



 NEWS

 MEETINGS & EVENTS

 BLOG

 APLU IN THE NEWS

DECEMBER 18, 2015

APLU Statement on Congressional Passage of Tax Extender Bill

DECEMBER 17, 2015

APLU Statement on FY2016 Omnibus Appropriations Bill

DECEMBER 15, 2015

APLU's Michael Tanner Named National Academy of Inventors Fellow

[View All News >](#)

Strengthening & Advancing Public Universities Collectively.

Focused on increasing degree completion, advancing research, and expanding economic impact.

 **Screenshot Added**

A screenshot was added to your APLU IT



Members

- Access, Diversity & Excellence (CADE)
- Commission on Food, Environment, & Renewable Resources (CFERR)
- Information, Measurement, & Analysis (CIMA)
- Innovation, Competitiveness, & Economic Prosperity (CICEP)
- International Initiatives (CII)
- Science & Mathematics Teaching Imperative (SMTI)
- Urban Serving Universities

HOME > MEMBERS > COMMISSIONS

Commissions

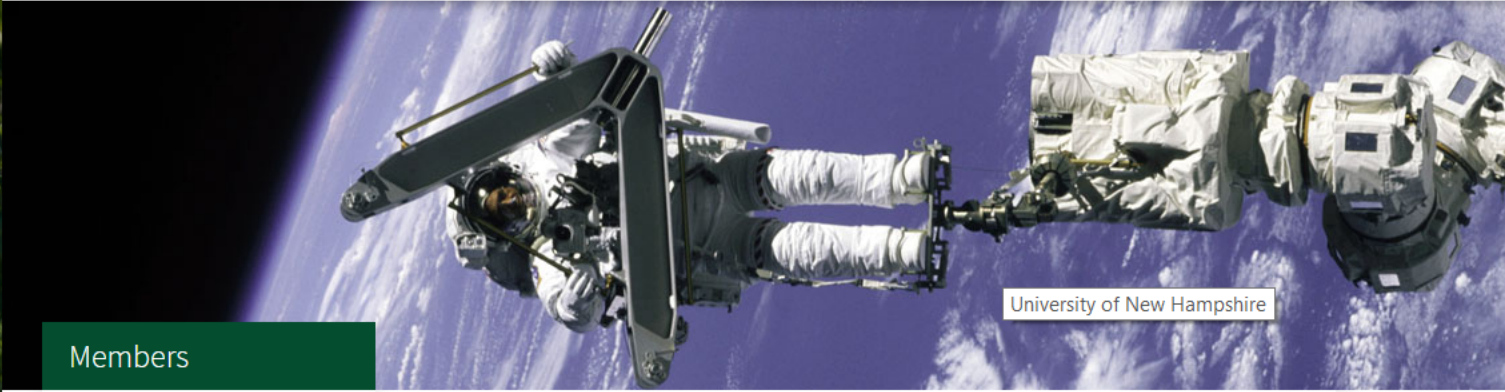
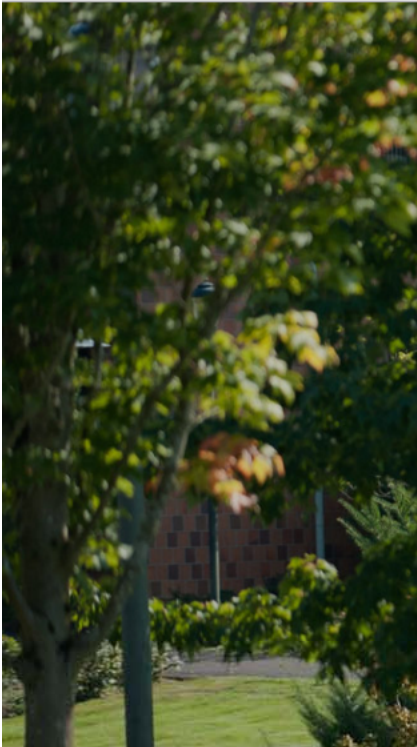
APLU's commission structure enables individuals from multiple disciplines across the universities to come together to address critical issues and expand their knowledgebase in areas of common interest regardless of position.

- Commission on Access, Diversity and Excellence (CADE)
- Commission on Food, Environment, and Renewable Resources (CFERR)
- Commission on Information, Measurement, and Analysis (CIMA)
- Commission on Innovation, Competitiveness, and Economic Prosperity (CICEP)
- Commission on International Initiatives (CII)
- Commission on the Science and Mathematics Teaching Imperative (SMTI)
- Coalition of Urban Serving Universities

Members in the S

University of Wa

University of Wi



Members

- [Commission on Food, Environment & Renewable Resources \(CFERR\)](#)
- [Board on Agriculture Assembly](#)
- [Board on Human Sciences](#)
- [Board on Natural Resources \(BNR\)](#)
- [Board on Oceans, Atmosphere, and Climate](#)
- [Board on Veterinary Medicine](#)
- [CFERR Executive Committee](#)
- [CFERR Organizational Chart](#)
- [CFERR Rules of Operation](#)
- [CFERR Staff](#)
- [CFERR Library](#)

HOME > MEMBERS > COMMISSIONS > COMMISSION ON FOOD, ENVIRONMENT & RENEWABLE RESOURCES (CFERR)

Commission on Food, Environment & Renewable Resources (CFERR)

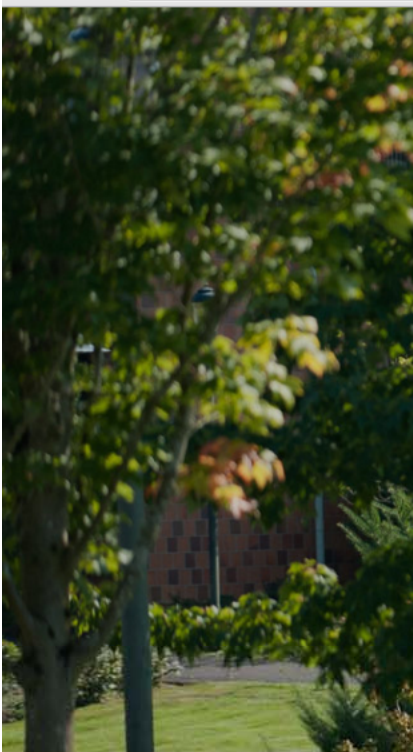
The Commission on Food, Environment, and Renewable Resources focuses on broad cross-cutting issues related to agriculture, food, fiber, human sciences, natural resources (ecology, fish and wildlife, forestry, mineral resources and water resources), oceans, atmosphere, climate and veterinary medicine in the functional areas of research, extension and teaching. The commission seeks to formulate and implement an integrated federal-relations program and formulate Congressional budget recommendations in these high-priority areas of national concern, as well as to forge partnerships with government agencies whose mission areas are congruent with the commission's activities.



Meetings & Events

JAN
20
Natio
Exam
Educ
Econ
Antir
Stew
All Day
Hyatt
400 Ne
W., We

MAR
6
Joint
Meeti
All Day
The W
Courtl
Alexar



Members

Commission on Food, Environment & Renewable Resources (CFERR)

Board on Agriculture Assembly

- Policy Board of Directors
- Academic Programs Section (APS)
- Administrative Heads Section
- Cooperative Extension Section (CES)
- Experiment Station Section
- International Agriculture Section (IAS)
- CARET
- Non-land-grant Agriculture and Renewable Resources Universities (NARRU)

Board on Human Sciences

HOME > MEMBERS > COMMISSIONS > COMMISSION ON FOOD, ENVIRONMENT & RENEWABLE RESOURCES (CFERR) > BOARD ON AGRICULTURE ASSEMBLY

Board on Agriculture Assembly

The Board on Agriculture Assembly (BAA) is a unit of the Association of Public and Land-grant Universities (APLU) Commission on Food, Environment, and Renewable Resources (CFERR). The purpose of the BAA is the promotion of agriculture in all of its phases (food, environment, agriculture, natural resources, and international) in the state universities and land-grant colleges of the states, the District of Columbia, the Commonwealth of Puerto Rico, the territories of the Pacific, and the U. S. Virgin Islands.

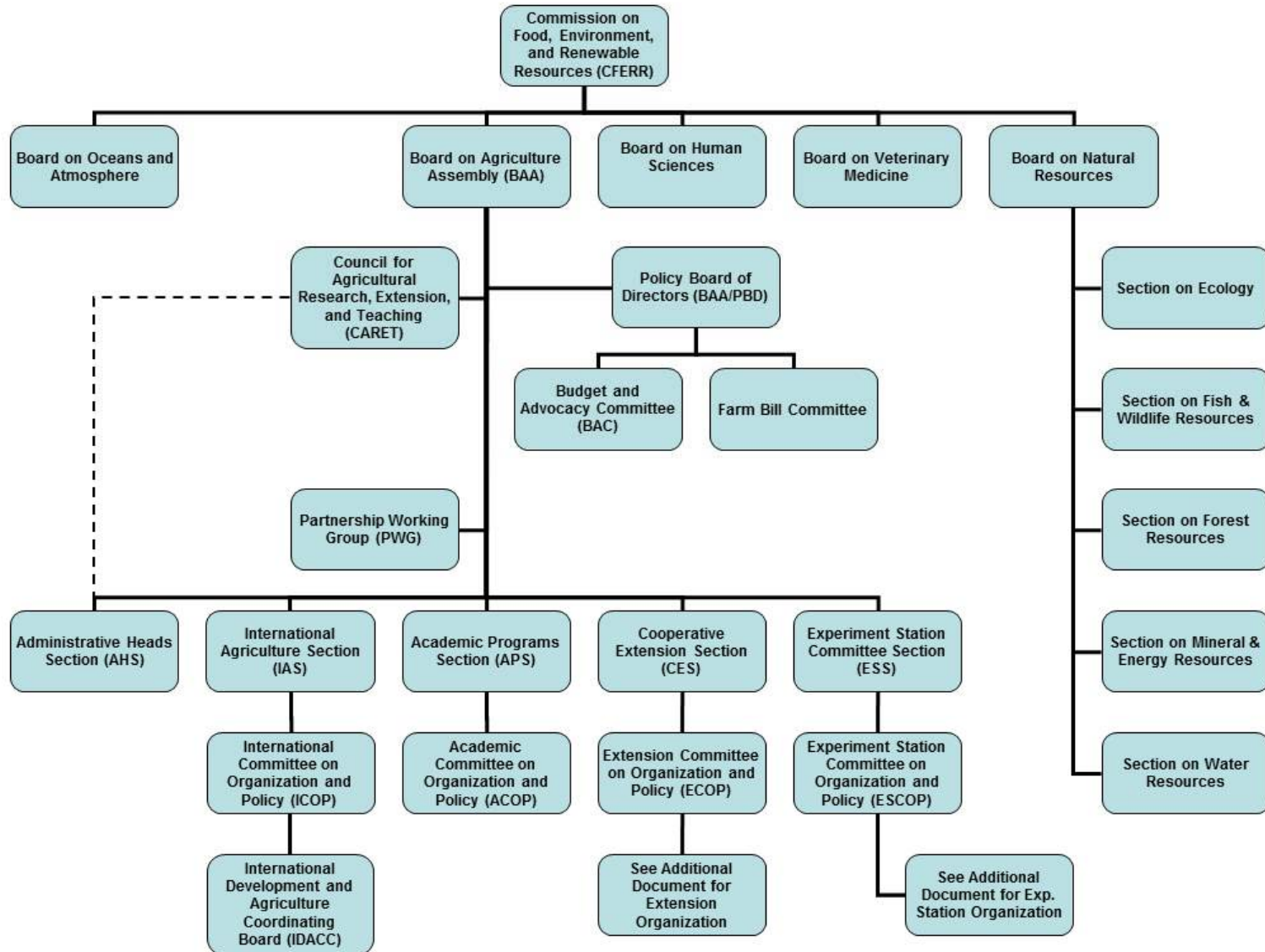
The BAA is comprised of the following sections: Academic Programs Section; Administrative Heads Section; Cooperative Extension Section; Experiment Station Section; and, the International Agriculture Section.



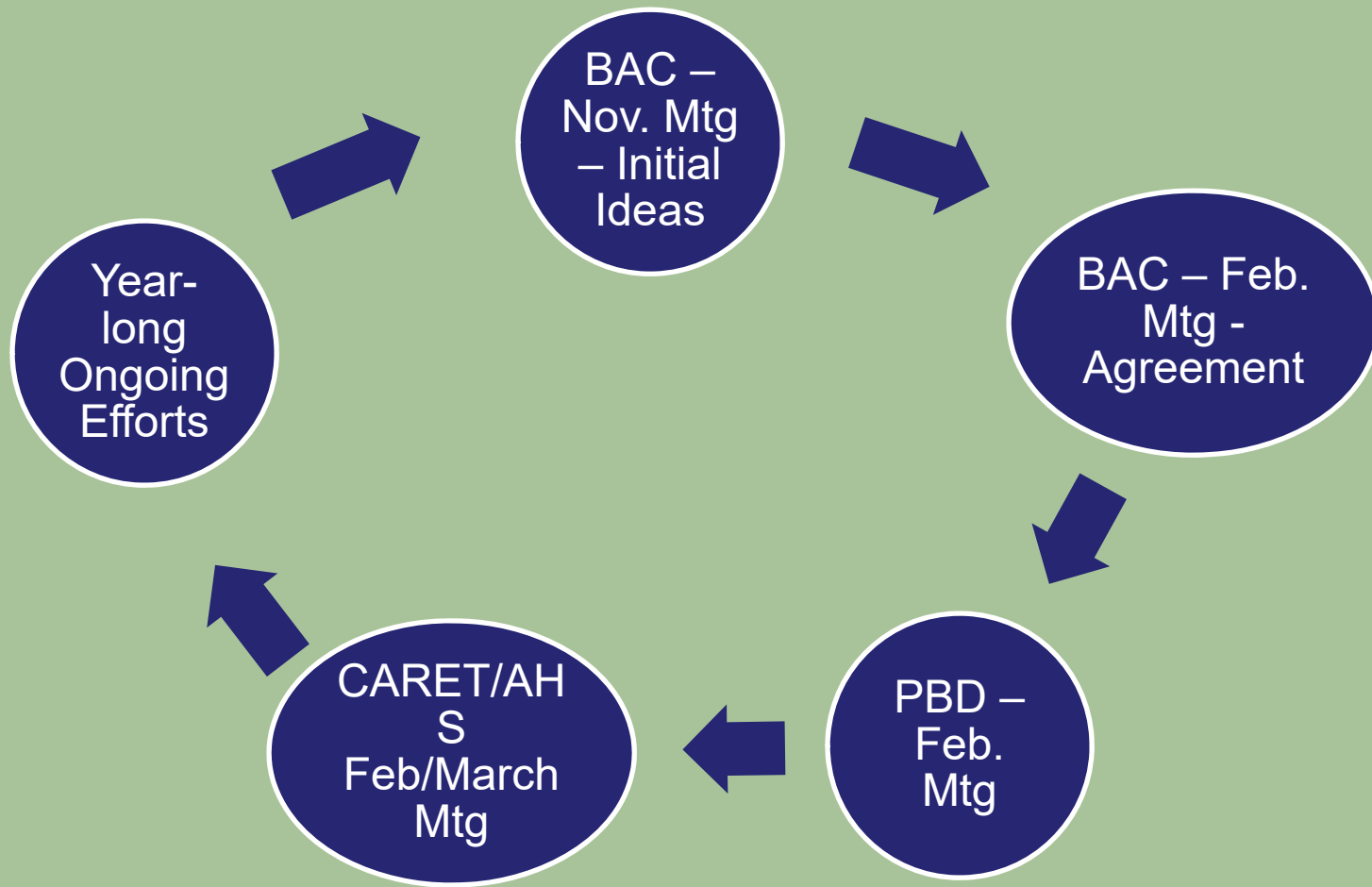
Meetings & Events

JAN 20 National Exam Educ Econ Antir Stewa All Day Hyatt 400 Ne W., Wa

MAR 6 Joint Meeti All Day The W Courtl Alexar



Timeline



Timeline

